



CERTIFICATE OF ANALYSIS

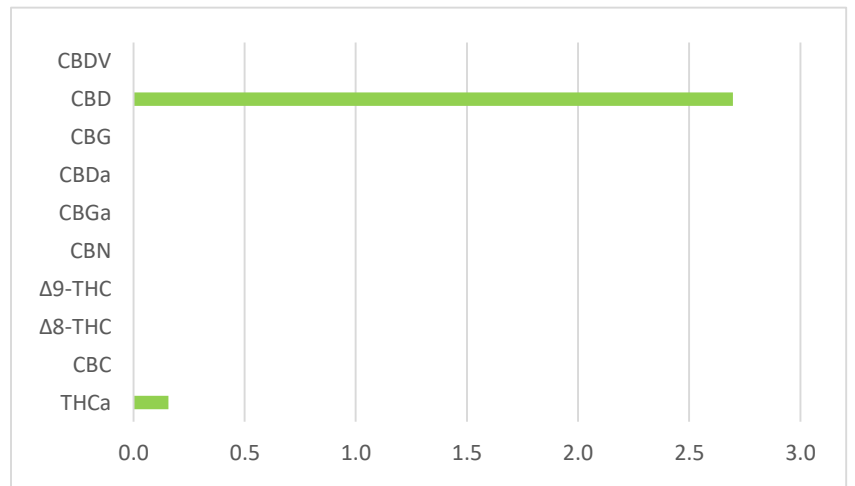
351 N Air Depot Blvd, Ste. C
Midwest City, Oklahoma, 73110
Questions@405analytical.com
(405) 548-5734

Metric ID **NON-METRC CBD SAMPLE**
 Lab Sample ID **7801**
 Customer Name **420 BOMB**
 Customer License **NON-METRC CBD SAMPLE**
 Sample Matrix **CBD OIL**
 Strain/Description **MASSAGE**
 Customer Batch ID **MASSAGE103123**
 Date Sampled **11/2/2023**
 Sampling Method **CUSTOMER SUPPLIED**
 Quantity Received (g) **3.00**
 Metric Source Package **NON-METRC CBD SAMPLE**
 Date Completed **11/7/2023**



Total % THC	Total % CBD	Total % Terpenes
0.14	2.70	NT

Cannabinoids	mg/g	%
CBDV	<LOQ	<LOQ
CBD	26.97	2.70
CBG	<LOQ	<LOQ
CBDa	<LOQ	<LOQ
CBGa	<LOQ	<LOQ
CBN	<LOQ	<LOQ
Δ9-THC	<LOQ	<LOQ
Δ8-THC	<LOQ	<LOQ
CBC	<LOQ	<LOQ
THCa	1.57	0.16
Total Cannabinoids	28.54	2.85



Total THC% = (0.877*THCa%)+Δ9-THC%+Δ8-THC%

Total CBD% = (0.877*CBDa%) + CBD%

Total THC Per Unit = Unit NetWt(g)*((0.877*mgTHCa)+mgΔ9-THC+mgΔ8-THC)

Total CBD Per Unit = Unit NetWt(g)*((0.877*mgCBDa)+mgCBD)

Metrc ID **NON-METRC CBD SAMPLE**

Batch ID **MESSAGE103123**

Page 2 of 4

Sample ID **7801**

Date Sampled **11/2/2023**

Customer Name **420 BOMB**

Sampling Method **CUSTOMER SUPPLIED**

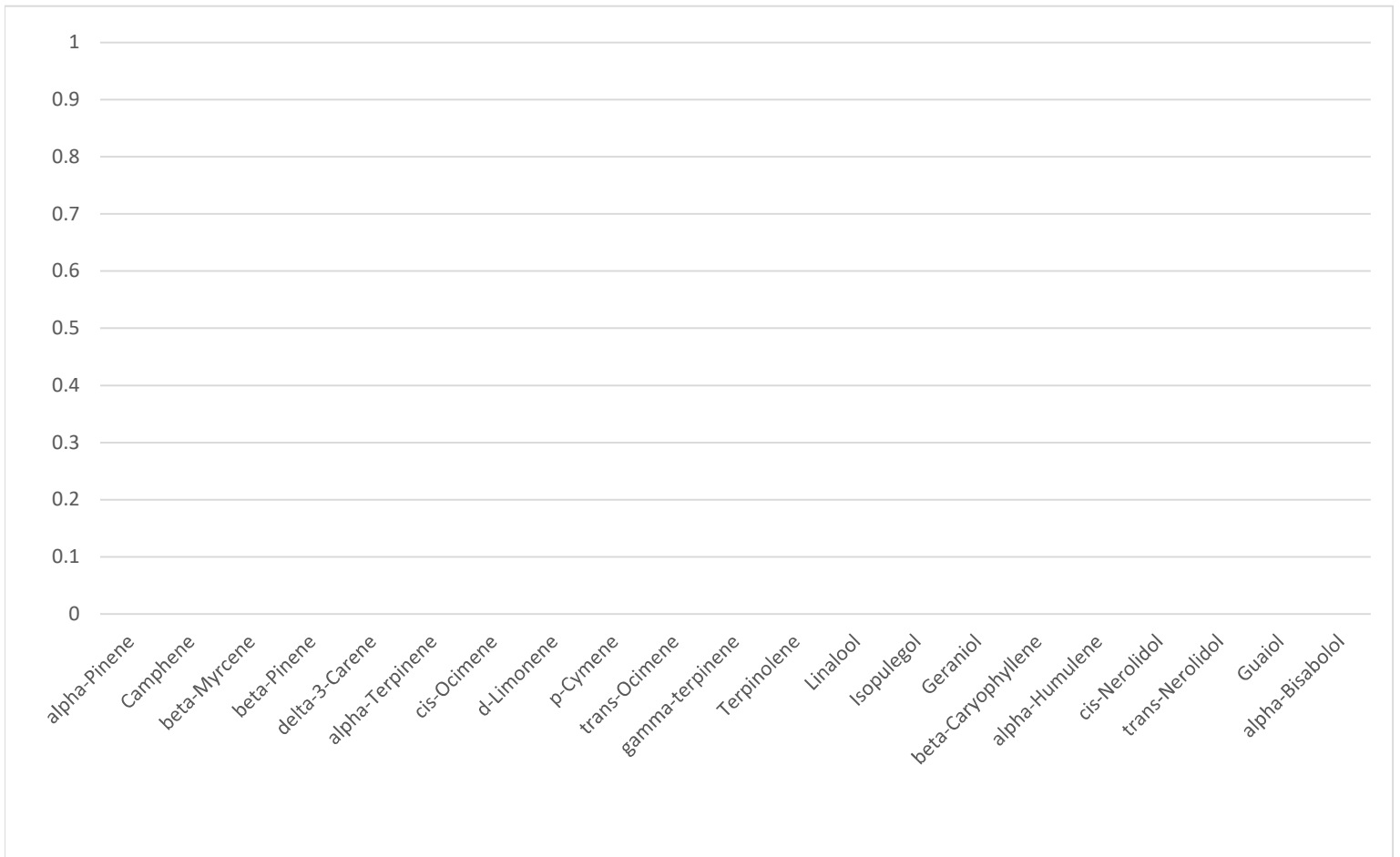
Sample Matrix **CBD OIL**

Quantity Received **3.00**

Strain/Description **MESSAGE**

Date Completed **11/7/2023**

Terpenes	mg/g	%	Terpenes	mg/g	%
alpha-Pinene	NT	NT	Terpinolene	NT	NT
Camphene	NT	NT	Linalool	NT	NT
beta-Myrcene	NT	NT	Isopulegol	NT	NT
beta-Pinene	NT	NT	Geraniol	NT	NT
delta-3-Carene	NT	NT	beta-Caryophyllene	NT	NT
alpha-Terpinene	NT	NT	alpha-Humulene	NT	NT
cis-Ocimene	NT	NT	cis-Nerolidol	NT	NT
d-Limonene	NT	NT	trans-Nerolidol	NT	NT
p-Cymene	NT	NT	Guaiol	NT	NT
trans-Ocimene	NT	NT	alpha-Bisabolol	NT	NT
gamma-terpinene	NT	NT			
			Total Terpenes	NT	NT



Metric ID **NON-METRIC CBD SAMPLE**
 Sample ID **7801**
 Customer Name **420 BOMB**
 Sample Matrix **CBD OIL**
 Strain/Description **MESSAGE**

Batch ID **MESSAGE103123**
 Date Sampled **11/2/2023**
 Sampling Method **CUSTOMER SUPPLIED**
 Quantity Received **3.00**
 Date Completed **11/7/2023**

Pesticides			Residual Solvents			
	ppm	Pass/Fail		%	ppm	Pass/Fail
Imidacloprid [0.4ppm]	NT	NT	Acetone [1000ppm]	NT	NT	NT
Imazalil [0.2ppm]	NT	NT	Benzene [2ppm]	NT	NT	NT
Myclobutanil [0.2ppm]	NT	NT	Butanes [1000ppm]	NT	NT	NT
Malathion [0.2ppm]	NT	NT	Heptanes [1000ppm]	NT	NT	NT
Azoxystrobin [0.2ppm]	NT	NT	Hexane [60ppm]	NT	NT	NT
Bifenazate[0.2ppm]	NT	NT	Isopropyl Alcohol [1000ppm]	NT	NT	NT
Spirotetramat [0.2ppm]	NT	NT	Pentane [1000ppm]	NT	NT	NT
Tebuconazole [0.4ppm]	NT	NT	Propane [1000ppm]	NT	NT	NT
Spinosad [0.2ppm]	NT	NT	Toluene [180ppm]	NT	NT	NT
Abamectin [0.5ppm]	NT	NT	Xylenes [430ppm]	NT	NT	NT
Spiromesifen [0.2ppm]	NT	NT	Methanol [600ppm]	NT	NT	NT
Etoxazole [0.2ppm]	NT	NT	Ethyl Acetate [1000ppm]	NT	NT	NT
Permethrin [0.2ppm]	NT	NT	Ethanol [5000ppm]	NT	NT	NT

Heavy Metals			Microbiology		
	ppm	Pass/Fail		CFU/g	Pass/Fail
Arsenic [0.2ppm]	NT	NT	STEC E. Coli [1cfu/g]	NT	NT
Cadmium [0.2ppm]	NT	NT	Salmonella [1cfu/g]	NT	NT
Lead [0.5ppm]	NT	NT	Aspergillus [1cfu/g]	NT	NT
Mercury [0.1ppm]	NT	NT	Total Mold and Yeast [10,000cfu/g]	NT	NT

Mycotoxins			Microscopic Inspection		
	ppb	Pass/Fail		Amount	Pass/Fail
Aflatoxin B1	NT	NT	Foreign Organic Material [2% Surface Area]	NT	NT
Aflatoxin B2	NT	NT	Foreign inorganic Material [Presence]	NT	NT
Aflatoxin G1	NT	NT			
Aflatoxin G2	NT	NT			
Total Aflatoxin [20ppb]	NT	NT			
Ochratoxin	NT	NT		Amount	Pass/Fail
Total [20ppb]	NT	NT			

Water Activity [0.65aW] **NT** **NT**
Moisture Content [15%] **NT** **NT**

Metrc ID **NON-METRC CBD SAMPLE**
Sample ID **7801**
Customer Name **420 BOMB**
Sample Matrix **CBD OIL**
Strain/Description **MESSAGE**

Batch ID **MESSAGE103123**
Date Sampled **11/2/2023**
Sampling Method **CUSTOMER SUPPLIED**
Quantity Received **3.00**
Date Completed **11/7/2023**

Method References:

Analysis	Method	Instrument	LOQ	Test Date	Analyst
Cannabinoids	SOP-CANFC	Agilent 1260 HPLC-UV	.001mg/g	11/7/2023	EHS
Terpenes	SOP-TER	Agilent Intuvo HS-GC	0.1mg/g	NT	NT
Water Activity	SOP-WA	Rotronics WA Meter	N/A	NT	NT
Residual Solvents	SOP-RES	Agilent Intuvo HS-GC	Benzene 1 ppm; Others 30 ppm	NT	NT
STEC E. Coli/Salmonella	SOP-MICROMIP2022	Agilent AriaMx QPCR	1 CFU/g	NT	NT
Aspergillus	SOP-MICROMIP2022	Agilent AriaMx QPCR	1 CFU/g	NT	NT
Molds and Yeast	SOP-MICROMIP2022	Agilent AriaMx QPCR	1 CFU/g	NT	NT
Heavy Metals	EPA 6010D/7471B	AGILENT ICP-MS	As .02ppm; Cd, Hg .01ppm; Pb .01ppm	NT	NT
Pesticides	CBL Method 2	AGILENT LC-MS-MS	0.1ppm	NT	NT
Mycotoxins	SOP-CBMX	AGILENT LC-MS-MS	5ppb	NT	NT
Visual Inspection	SOP-INS	N/A	N/A	NT	NT
Moisture Content	SOP-MOISTURE	Rotronics WA Meter	N/A	NT	NT

*Any sample not collected by 405 Analytical LLC trained samplers is "TESTED as received."

*Recoveries for all analyte standards: 90%-110% | Duplicate Recoveries <30%RPD | Blanks <BDL for all analytes.

*This data is provided as a service and makes no claims of efficacy or safety of product.

*405 Analytical LLC reserves the right to sub-contract work on an "as needed" basis to an accredited lab.

*This Certificate of Analysis shall only be reproduced in its full form and shall not be modified way.

*All results relate only to the items tested.

*The decision rule for statements of conformity (Pass/Fail) do not take into consideration uncertainty and are derived from Oklahoma Medical Marijuana Authority's action limits.

RL - Reporting Limit

LOQ - Limit of Quantitation

ND - Not detected above reporting limit

Unless otherwise specified RL=LOQ

GW = Completed by Gateway Labs

NT - Not tested

[] - Bracketed values are action limits. Meeting or exceeding this value will result in a failure of the analyte.

TT = Completed by Transparent Testing Tulsa

RPD - Relative Percent Difference

BDL - Below Detection Limit

Dr. Mark Clemenson
Laboratory Director

Krystal L Tilson
Quality Assurance Manager/Chemist